



Much Wenlock Town Council

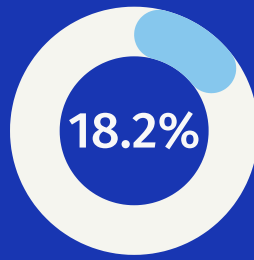
RESIDENTS' SURVEY ON PLANNING AND TRAFFIC REPORT



7th April 2022



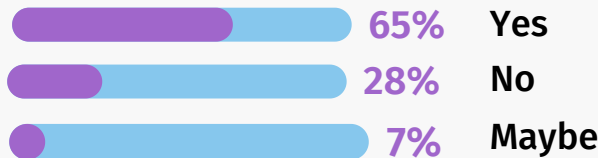
In March 2022 we sent out a survey to 1,800 households in Much Wenlock and received 329 responses



The Draft Local Plan is Shropshire Council's proposal for development in the county for the period 2016-2038. We asked local residents for opinions on how we should plan for Much Wenlock.

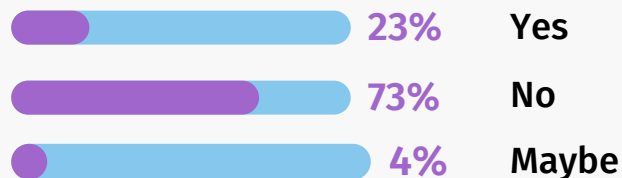
Q1

Do you think that the future proposals for development in Much Wenlock should be shaped by a refresh of our Neighbourhood Plan that includes further community consultation with residents?



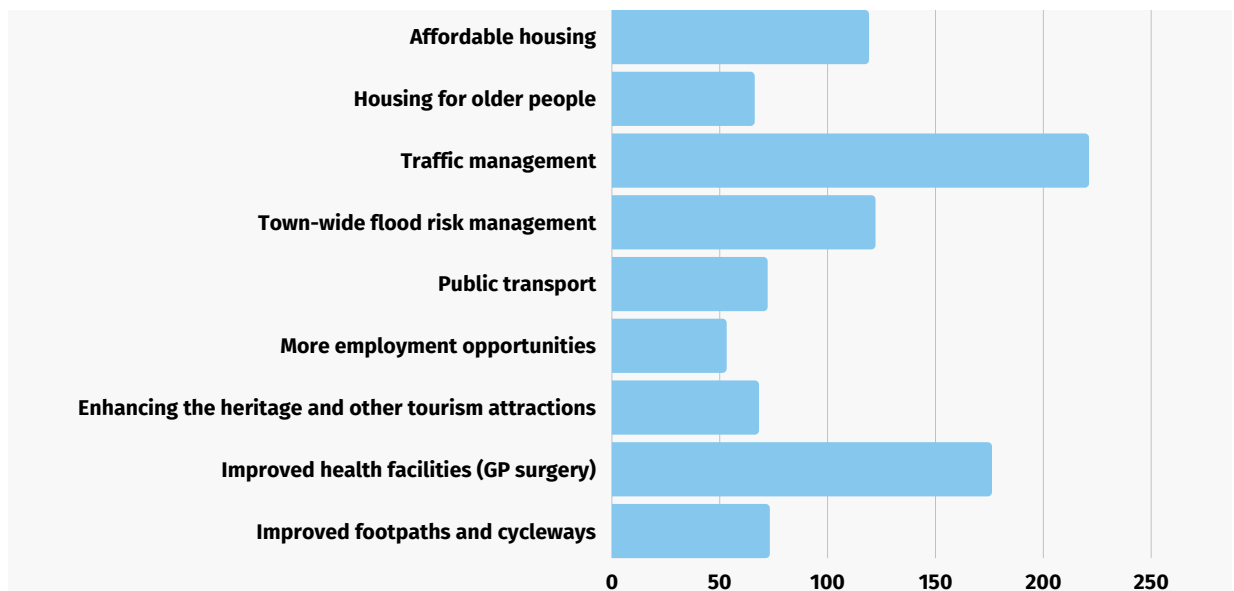
Q2

Do you think that the town's infrastructure is sufficient to allow development of 200 or more new houses?



Q3

What should be our priorities for investing in the town?





The Town Council is keen to understand local views about the Gaskell corner, increased traffic problems and other traffic issues within the town. Buildwas Power Station redevelopment will further compound the increasing traffic through the Gaskell corner. Shropshire Council is carrying out a Feasibility Study as a result of Town Council pressure to look into the problem. We asked for your views on transport issues.

Traffic and the Gaskell Corner Feasibility Study

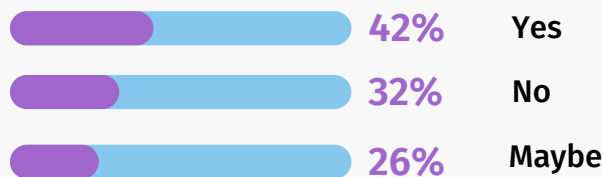
Q
1

The problems at the Gaskell corner cause several issues. We asked which ones affect you most. Results are shown with 1 (traffic delays/congestion) being the most important and 6 (Poor air quality) being least important.

Traffic delays/congestion	 	Most Important (1)
Rat-running through town	 	Very Important (2)
Safety/accidents	 	Important (3)
Speeding through town	 	Not as Important (4)
HGVs driving through town	 	Less Important (5)
Poor air quality		Least Important (6)

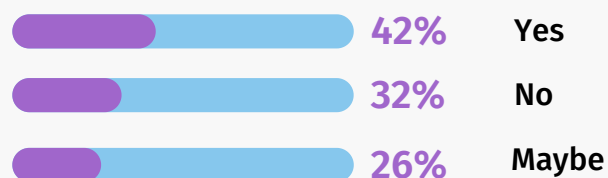
Q
2

Should the Feasibility Study look at how measures to reduce car use can help? These could include cycleways or improved public transport.



Q
3

Should the Feasibility Study look at ways for how traffic might bypass the town?



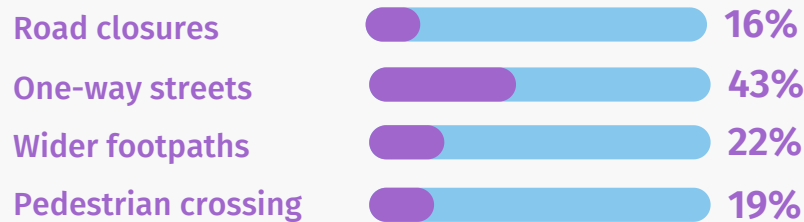


The Town Council is keen to understand local views about the Gaskell corner, increased traffic problems and other traffic issues within the town. Buildwas Power Station redevelopment will further compound the increasing traffic through the Gaskell corner. Shropshire Council is carrying out a Feasibility Study as a result of Town Council pressure to look into the problem. We asked for your views on transport issues.

Traffic and the Gaskell Corner Feasibility Study

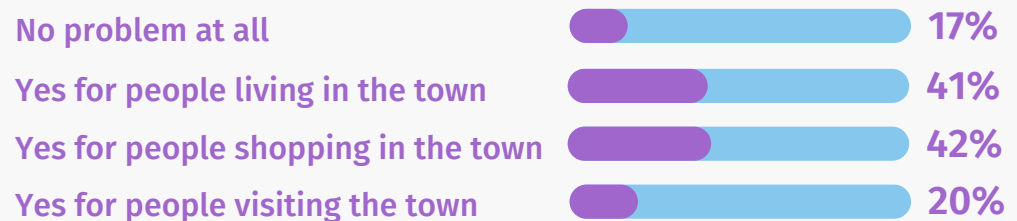
Q4

Delays at the Gaskell corner are causing more and more traffic to cut through the town. Which traffic management measures should the study consider to discourage rat-running?



Q5

Do you think that parking in the town is an issue?





Summary of any other comments or ideas that would be useful for the Feasibility Study

From the comments posted there is a clear trend in views with regard to traffic within the town. Three points especially come through in the surveys returned: free parking in car parks, reduced traffic and calming measures for the town centre and main road, and a bypass.

A high percentage of respondents feel that the rate of traffic through High Street, Barrow Street and Sheinton Street needs to be combatted with traffic calming measures, a reduction in the speed limit or possibly a one way system. Parking on the street is also a contributing factor here, adding to congestion. Part of this problem is due to current car parks not being used to capacity. Local workers, reluctant to pay to park, opt for free on-street parking, causing issues for shoppers also wanting to avoid paying to park or wanting to park outside shops. A strong majority of respondents feel car parks should be free or that there should be an option for free passes for workers or residents who otherwise use on street parking. With less traffic in the town centre, respondents feel the pavements could be widened to allow easier access for pedestrians and those with pushchairs and mobility aids .

Another strong view is that a bypass would help with the high volumes of traffic through the main roads. The number of HGV's travelling through the town is also a worry to residents, in particular on the Bourton Road and Oakfield Park areas.

Other repeated comments include a need to repair roads and pavements and the management of vegetation bordering footpaths.

Other issues raised included housing for younger families, the need for improved public transport to allow passengers to connect with rail services and more events in the town to accommodate the younger generations.





Location of respondents

Ashworth Court 4	King Street 4
Back Lane 3	Linden Avenue 4
Barrow Street 19	Longville 1
Benthall 1	Mardol Terrace 2
Blakeway Hollow 4	Mendips View 1
Bourton 2	New Road 1
Bourton Westwood 3	Oakfield Park 11
Bourton Road 3	Park Road 1
Bowling Green Way 1	Queen Street 8
Bridge Road 2	Racecourse Lane 3
Brockton 1	Sheinton Street 18
Bull Ring 4	Shrewsbury Road 2
Callaughtons Ash 2	Smithfield Road 11
Easthope 1	St Mary's Road 9
Falcons Court 2	St Milburga's Row 1
Farley Road 4	St Owen's Road 3
Foresters Avenue 4	Stretton Road 9
Foresters Gardens 2	Stretton Westwood 1
Havelock Crescent 1	Swan Meadow 6
High Causeway 7	Sytche Lane/Close 4
High Street 14	The Crescent 4
Hodgecroft 3	The Paddock 2
Homer 13	Victoria Road 4
Hughley 1	Walton Avenue 8
Hunters Gate 18	Wilmore Street 3
Kenley 5	Wyke 6



Notes regarding analysis

Question 1 of the Traffic and Gaskell Corner section of the survey was interpreted in different ways by respondents. This meant that some respondents allocated priorities 1 to 6 to the issues listed, while others, for example, gave every option a priority 1. Some did not allocate every issue listed a priority rating.

For the analysis, the priority rating given for each option was listed, and a total calculated for each option. The totals indicated the order of importance of each issue, thus the issue with the lowest overall total contained the highest number of priority 1: traffic delays/congestion.

Responses to other questions were simply totalled and then converted into percentages based on the number of responses per option, e.g. yes/no/maybe.

Comments provided were collated by topic and summarised into the overview shown at Q 6.